

Erratum

PTTG promotes invasion in human breast cancer cell line by upregulating EMMPRIN via FAK/Akt/mTOR signaling: Am J Cancer Res. 2016; 6(2): 425-439

Hui Gao^{1*}, Feng Zhong^{1*}, Jing Xie¹, Jianjun Peng², Zhiwu Han^{1,3}

¹Qingdao University, Qingdao 266071, Shandong, China; ²College of Life Sciences, Chongqing Normal University, Chongqing 401331, China; ³Qingdao University Affiliated Hospital, Qingdao 266071, Shandong, China. *Equal contributors.

Received March 9, 2020; Accepted March 20, 2020; Epub April 1, 2020; Published April 15, 2020

Recently, we rechecked all our papers and realized that some data in **Figures 1** and **8** were wrongly presented. The data presented came from the wrong folder. Therefore, we would like to make corrections. Hope you can help me with this process. The revised **Figures 1** and **8** are presented as following:

Address correspondence to: Jianjun Peng, College of Life Sciences, Chongqing Normal University, Chongqing 401331, China. Tel: +86-13953279992; E-mail: jianjunpeng@126.com; Zhiwu Han, Qingdao University, Qingdao 266071, Shandong, China. Tel: +86-18661805776; E-mail: drzhiwuhan@163.com

PTTG promotes invasion in human breast cancer

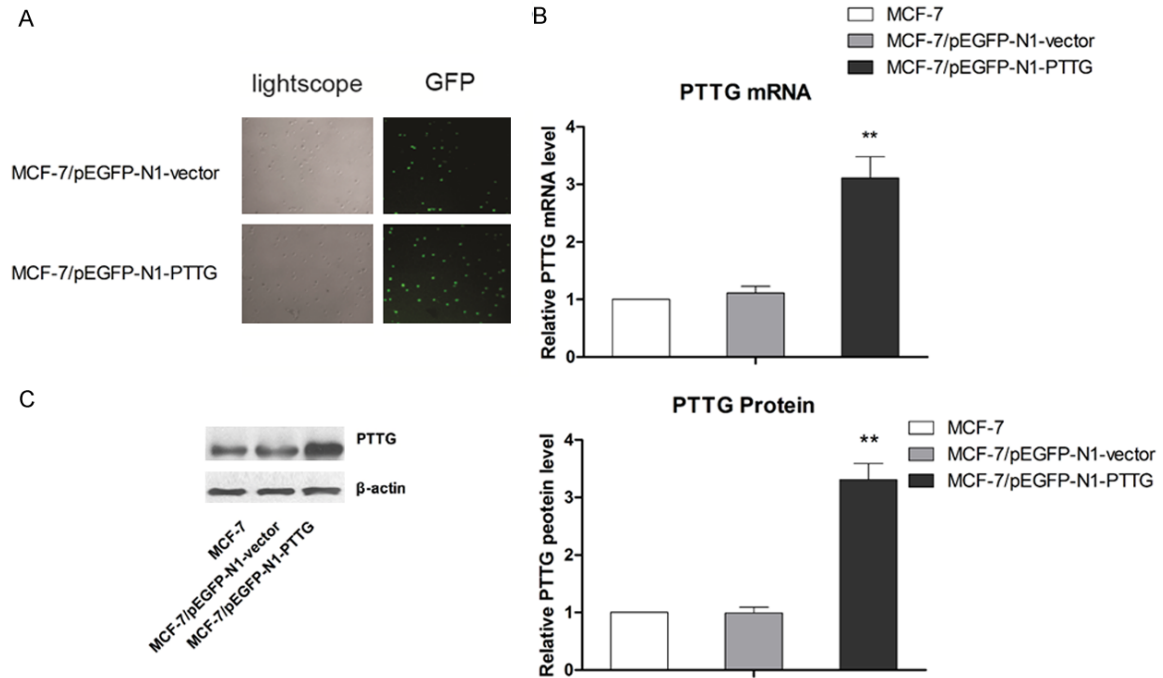


Figure 1. Transfection of PTTG overexpressing plasmid and confirmation of overexpressing PTTG in MCF-7 cells. A. The transfection efficiency was evaluated by fluorescence microscopy. Representative transfection results are shown. B. The expression of PTTG mRNA was measured with qRT-PCR. C. The expression of PTTG protein was detected with western blots. The average signal intensity was standardized to β -actin and data are shown as mean \pm SD of triplicate experiments. ** $P < 0.01$ vs. control. The representative western blot is shown. Data are shown as mean \pm SD of triplicate experiments. ** $P < 0.01$ vs. MCF-7.

PTTG promotes invasion in human breast cancer

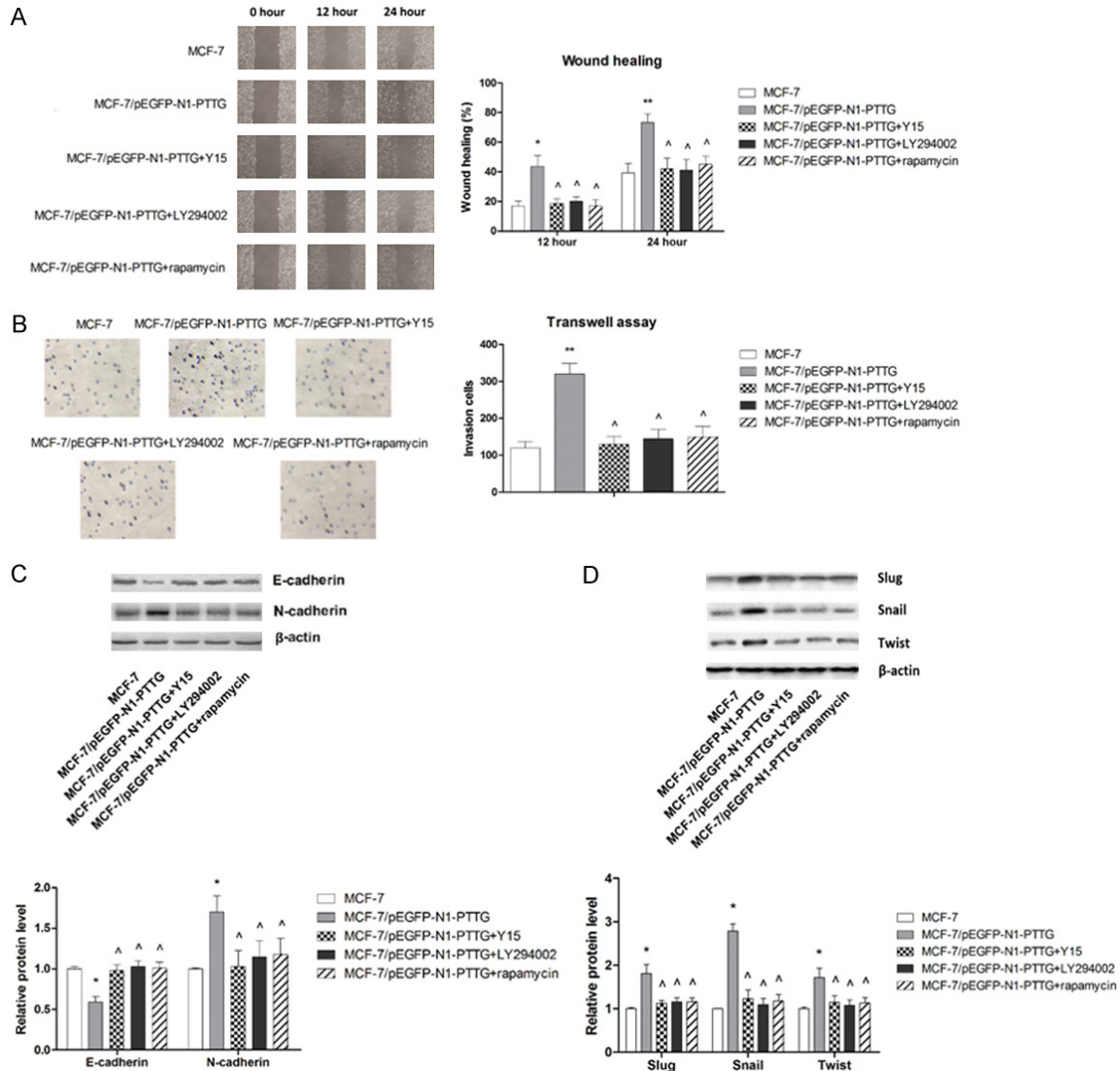


Figure 8. PTTG enhances metastatic potential of MCF-7 cells through FAK/Akt/mTOR pathway. A. Inhibitors of FAK/Akt/mTOR signaling pathway significantly abolished the inducing effect of PTTG on cell migration. Representative wound closure results are shown. B. Inhibitors of FAK/Akt/mTOR signaling pathway significantly abolished the inducing effect of PTTG on cell invasion. Representative figures of cell invasion are shown. C. Inhibitors of FAK/Akt/mTOR signaling pathway significantly abolished the changes in EMT marker expressions induced by PTTG. The representative western blot is shown. D. Inhibitors of FAK/Akt/mTOR signaling pathway significantly abolished the changes in transcriptional repressors expressions induced by PTTG. *P < 0.05 vs. MCF-7, **P < 0.01 vs. MCF-7, ^P < 0.05 vs. MCF-7/pEGFP-N1-PTTG.